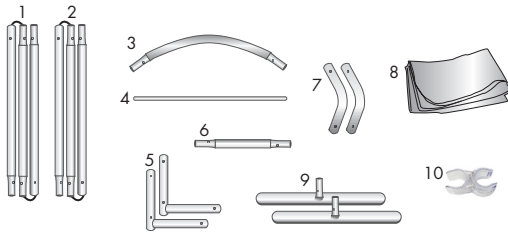


Eurofit Arcs

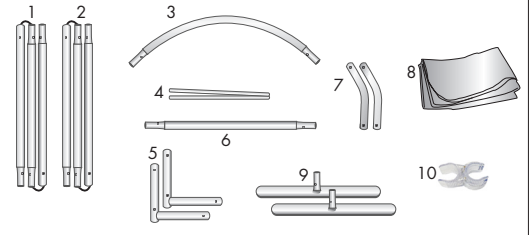
Product Parts 2FT Arc

- 1 - 3pc Left Pole
- 2 - 3pc Right Pole
- 3 - Top Curved Pole
- 4 - Horizontal Center Pole
- 5 - 90° Bottom Corners (x2)
- 6 - Bottom Center Pole
- 7 - Top Curved Corners (x2)
- 8 - Graphic
- 9 - Feet (x2)
- 10 - Plastic Hinge Connector



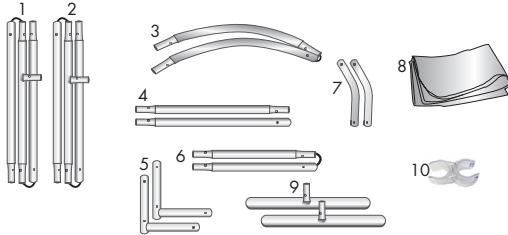
Product Parts 3FT Arc

- 1 - 3pc Left Pole
- 2 - 3pc Right Pole
- 3 - Top Curved Pole
- 4 - 2pc Horizontal Center Pole
- 5 - 90° Bottom Corners (x2)
- 6 - Bottom Center Pole
- 7 - Top Curved Corners (x2)
- 8 - Graphic
- 9 - Feet (x2)
- 10 - Plastic Hinge Connector



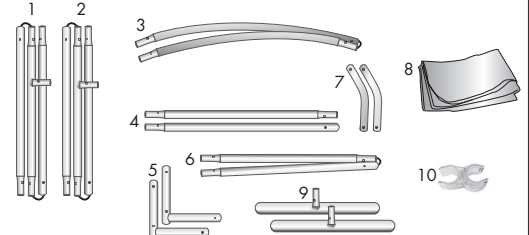
Product Parts 4FT Arc

- 1 - 3pc Left Pole
- 2 - 3pc Right Pole
- 3 - 2pc Top Curved Pole
- 4 - Horizontal Center Pole (x2)
- 5 - 90° Bottom Corners (x2)
- 6 - 2pc Bottom Center Pole
- 7 - Top Curved Corners (x2)
- 8 - Graphic
- 9 - Feet (x2)
- 10 - Plastic Hinge Connector



Product Parts 5FT Arc

- 1 - 3pc Left Pole
- 2 - 3pc Right Pole
- 3 - 2pc Top Curved Pole
- 4 - Horizontal Center Pole
- 5 - 90° Bottom Corners (x2)
- 6 - 2pc Bottom Center Pole
- 7 - Top Curved Corners (x2)
- 8 - Graphic
- 9 - Feet (x2)
- 10 - Plastic Hinge Connector



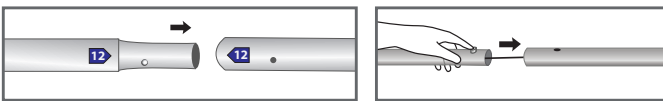
Display Set-Up

Step 1

Begin by removing all parts from the carry case and place on a clean, flat surface. Ensure you have all the components listed above.

Step 2

Assemble all the poles by connecting the corresponding numbers together while pressing the snap button as shown.

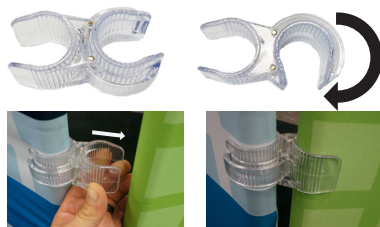


NOTE:

For the 2FT ARC, it is recommended that you start on the top of the display and work your way down.

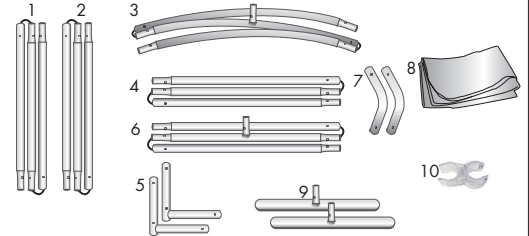
Plastic Hinge Connector

Used to connect all Eurofit Displays with 1.25" Diameter Poles.



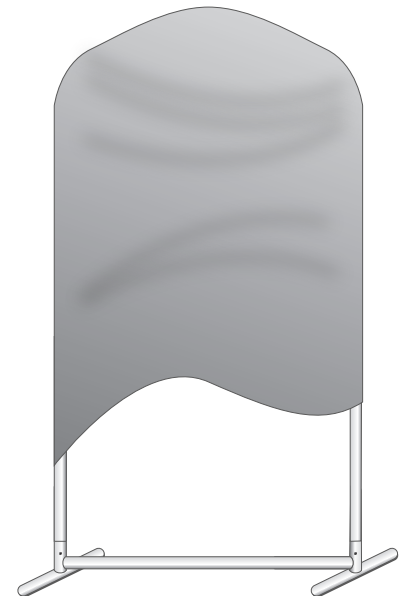
Product Parts 8FT Arc

- 1 - 3pc Left Pole
- 2 - 3pc Right Pole
- 3 - 3pc Top Curved Pole
- 4 - 3pc Vertical Center Pole
- 5 - 90° Bottom Corners (x2)
- 6 - 3pc Bottom Center Pole
- 7 - Top Curved Corners (x2)
- 8 - Graphic
- 9 - Feet (x2)
- 10 - Plastic Hinge Connector



Step 3

Drape the Graphic (8) over the hardware until it reaches the feet.



Storage & Care

Place all product parts into Carry Case and store in a cool dry location. Recommended for indoor use only. Machine wash on gentle cycle using mild detergent. Tumble Dry No Heat. Do NOT dry clean, Do NOT Iron.